



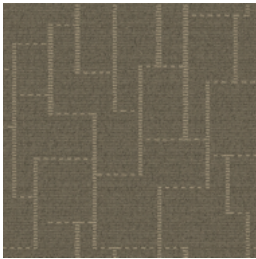
NEW HOPE

CONSTRUCTION	LOOP
PILE FIBER COMPOSITION	100% Nylon (Polyamide 6)
YARN TYPE	Cable
DYE METHOD	Solution Dyed
PILE WEIGHT	610 g/m <sup>2</sup>
NUMBER OF TUFTS	208560/m <sup>2</sup>
TUFTING GAUGE	1/12"
PRIMARY BACKING	Non-Woven
SECONDARY BACKING	<b>StableShield</b> - 100% Vinyl
OPTIONAL BACKINGS	<b>Recova</b> -PU Cushion, <b>EcoShield</b> -100% Recycled Vinyl
TILE SIZE	50 cm x 50 cm
PILE HEIGHT	2.3 mm / 5.5 mm
TOTAL PILE HEIGHT	8.0 mm
PILE TREATMENT	INVISTA Anti-Soil Treatment, Anti-Microbial (Optional)
RECOMMENDED INSTALLATION	Quarter Turn or Brick

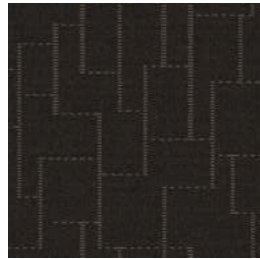


# SPECIFICATION 5

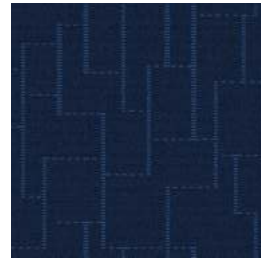
# COLOURLINE



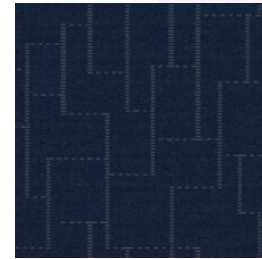
NEW HOPE - 645



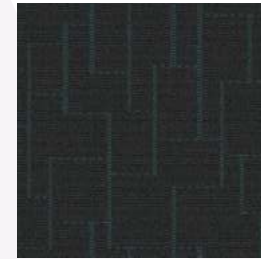
NEW HOPE - 648



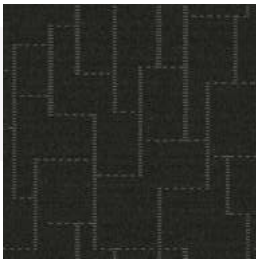
NEW HOPE - 654



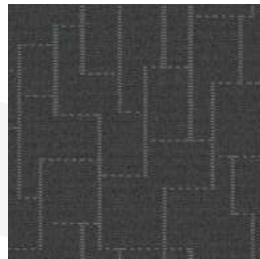
NEW HOPE - 657



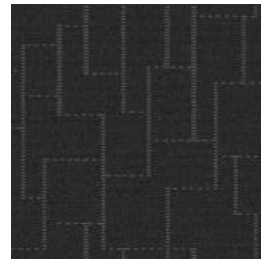
NEW HOPE - 664



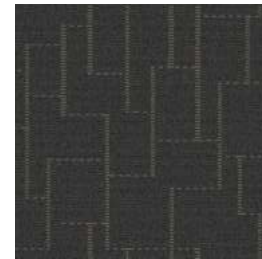
NEW HOPE - 667



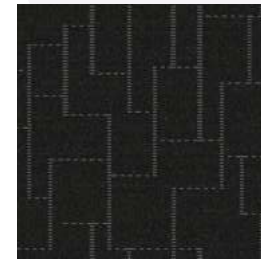
NEW HOPE - 675



NEW HOPE - 676



NEW HOPE - 677



NEW HOPE - 679



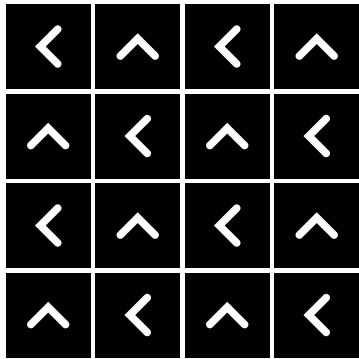




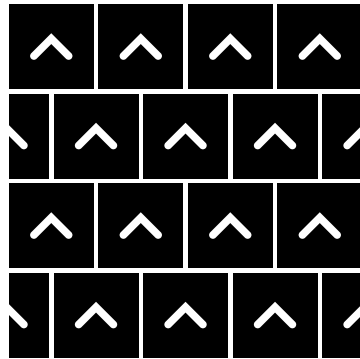


# HOW TO INSTALL

**QUARTER TURN**



**BRICK**





Standard  
*CARPETS*

[www.standardcarpets.com](http://www.standardcarpets.com)